

Southwell Road, Loughborough Junction, SE5

2 bedroom flat - conversion for sale

£385,000

Share of Freehold

Property Details

A pretty two bedroom flat occupying the middle floor of a charming converted Victorian terraced house, a two minute walk from Loughborough Junction and twelve minutes from Brixton Underground station. A large reception room stretches across the entire front of this property, with large sash windows that allow an airy and bright atmosphere into the room. The property boasts plenty more Victorian charm with a traditional iron fireplace and an embellished ceiling rose. The space is ideal for relaxing, dining or socialising. The two bedrooms are separated by a full equipped contemporary kitchen, allowing privacy between each room, making this property appealing to anyone desiring to let a second room or share with friends. The flat will also appeal to anyone looking for a buy-to-let in a popular area or a convenient pied-a-terre with it's rapid city transport links. Nestled at the back is a sleek, modern family sized bathroom.

Features

- Two double bedrooms
- Characterful features
- Bright and airy
- Victorian conversion
- Close to the station
- Local amenities in moments
- Share of freehold

Council tax band C EPC rating D (65)



Southwell Road, Loughborough Junction, SE5



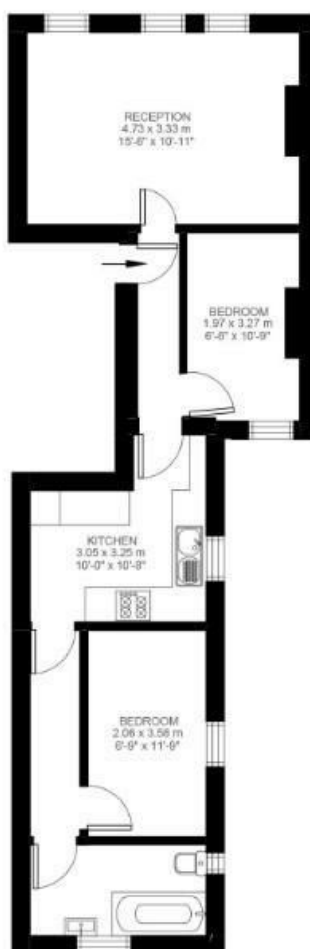
2 Bedroom Flat

Approx internal area:

551 sqft 51 sqm

While we do try our very best, floor plans are produced as a guide only and we take no responsibility for the precise accuracy with which any property is represented

Southwell Road



First Floor



Southwell Road, Loughborough Junction, SE5

